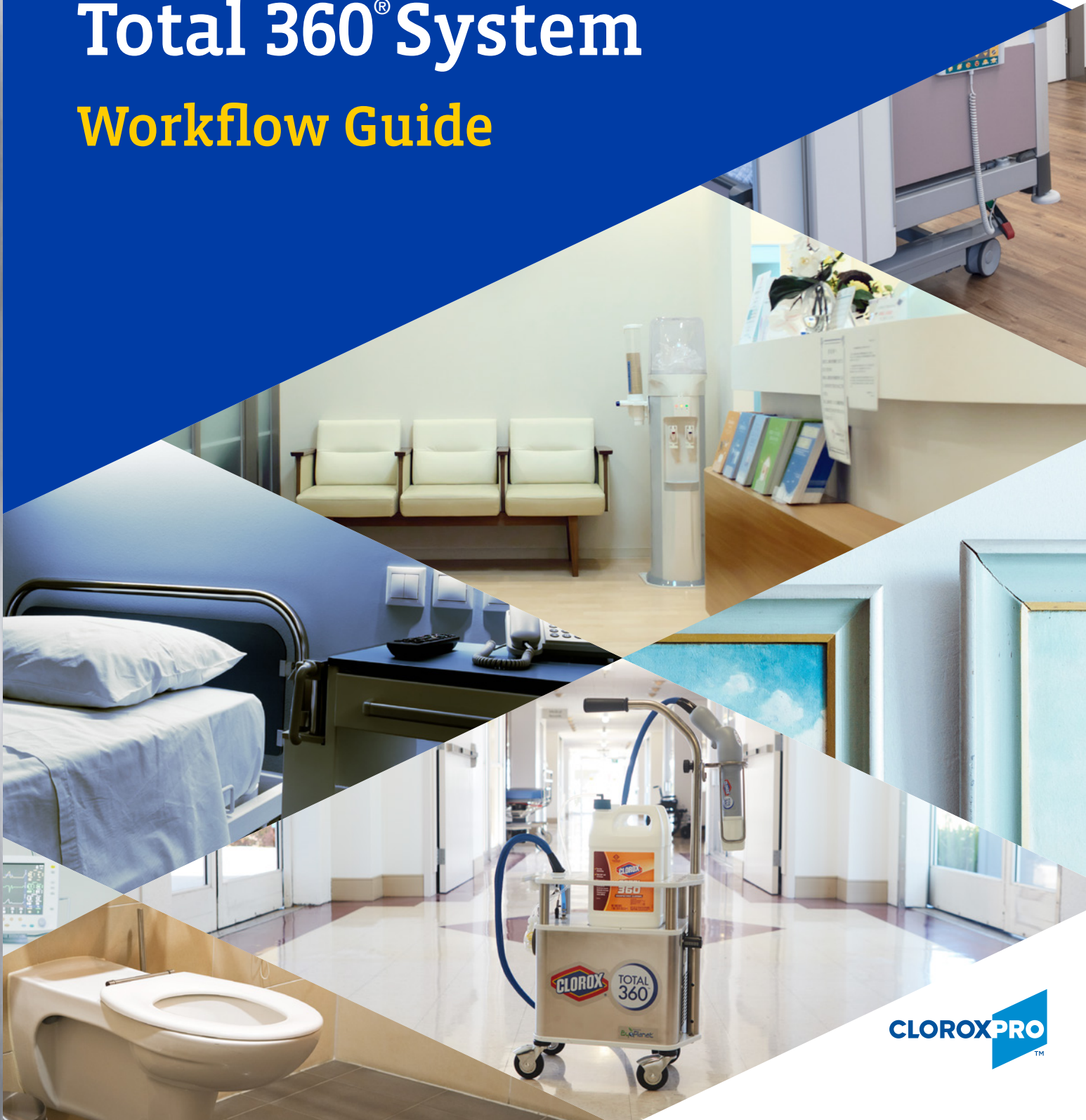





Clorox Total 360[®] System Workflow Guide



Guidelines for best practices



The Clorox Total 360® System brings the power of electrostatic technology to help prevent Healthcare Associated Infections. After deciding the Clorox Total 360® System is a good solution for your facility, use this guide to answer key questions. Documenting your plans will ensure successful roll-out from Day 1.

Where should the Clorox Total 360[®] System be used?



The Clorox Total 360[®] System is great for places that are large or have many complex surfaces. The device can also be used anywhere in your facility where there is risk of missing surfaces with manual disinfecting methods.

Common places to use Clorox Total 360[®] System

AREAS	EXAMPLES
Patient Rooms	Isolation Patient Rooms, Non-Isolation Patient Rooms, Patient Bathrooms, Emergency Department, Privacy Curtains
Patient Care Areas	Operating Rooms, Physical Therapy, Burn Unit, Radiology, Dialysis, Oncology, Outbreak Units
Public Spaces	Waiting Rooms, Public Restrooms, Hallways, Staff Locker Rooms, Children's Play Areas*
Patient Transport Equipment	Wheelchairs, Gurneys, EVS Carts, Equipment Storage Closets, EMS Departments
Administrative Areas	Offices, Meeting Rooms, Staff Desks

* For these areas, consider using Clorox[®] Anywhere™ Daily Disinfectant & Sanitizer, a no-rinse, food-contact disinfectant that disinfects hard surfaces as quickly as 5 minutes and sanitizes food-contact surfaces in 1 minute.

CLOROXPRO TIP

Consult with your Clorox Healthcare sales representative to determine the appropriate number of devices your facility needs. The Clorox Total 360[®] Workflow Guide provides recommendations on several considerations for device roll-out. Discuss each of these details with your Clorox Healthcare sales representative to ensure successful implementation. Visit www.cloroxtotal360.com for additional resources.

Notes:

How often should Clorox Total 360[®] be used?



Clorox recommends using Clorox Total 360[®] daily as a part of your regular disinfecting practice. Facilities may use the device more or less often depending on patient turnover rates and the specific public health risks posed to the facility.

Frequency of use for the Clorox Total 360[®] System

AREAS	HIGH-RISK UTILIZATION	LOW-RISK UTILIZATION
Patient Rooms	Upon Patient Discharge	Daily
Patient Care Areas	After Patient Use	Daily
Public Spaces	Daily	Weekly
Patient Transport Equipment	After Patient Use	Daily
Administrative Areas	Daily	Weekly

Studies show that Clorox Total 360[®] reduces bioburden on surfaces every time it is used. Studies also show that **daily** use of the Clorox Total 360[®] System produces best results compared to weekly usage.*

* Donskey, C. J. Evaluation of the Clorox Total 360[®] System for Disinfection in Healthcare Facilities. Manuscript in preparation, 2019.

CLOROXPRO TIP

After determining where the Clorox Total 360[®] System will be used, document how often EVS staff are expected to use the device and set specific targets to ensure EVS staff understand expectations up front. Adjust targets accordingly as risks change (e.g., during local flu outbreaks). Leverage the Clorox Total 360[®] System Use Log to record device utilization.

Notes:

When should Clorox Total 360[®] be used?



Since the Clorox Total 360[®] System is often used in addition to manual cleaning, Clorox recommends training EVS staff to use the device in conjunction with their daily cleaning and disinfecting practice, often immediately after an existing activity.

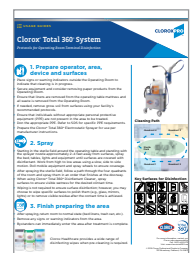
Example moments to use the Clorox Total 360 [®] System	
AREAS	WHEN TO USE
Patient Rooms	During terminal cleaning, immediately after manual disinfecting
Operating Rooms	End of day, immediately after manual disinfecting
Waiting Rooms	At night, immediately after vacuuming
Patient Transport Equipment	Immediately after placing equipment in storage

Notes:

CLOROXPRO TIP

For each department using the Clorox Total 360[®] System, identify the moment during your established protocols that it is easiest to add an electrostatic disinfecting step. Train staff on this new activity and be specific about when they should begin using the Clorox Total 360[®] System.

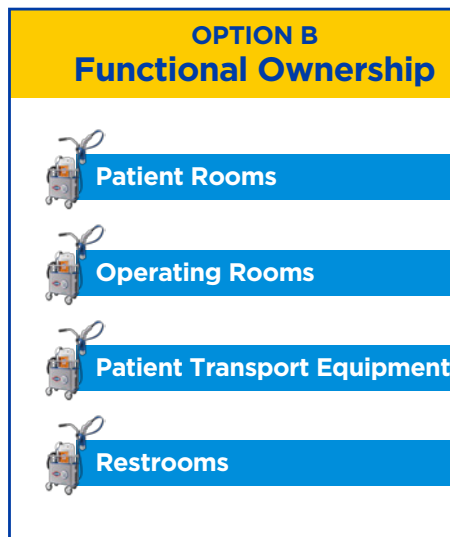
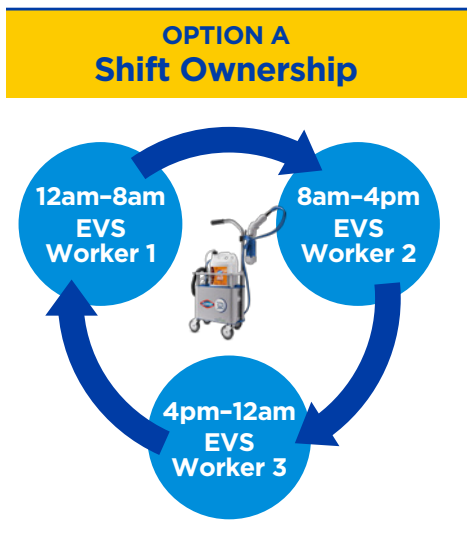
Leverage the Clorox Total 360[®] protocol sheets for more details and instructions in different departments.



How should I assign staff ownership of my Clorox Total 360® devices?



Establish ownership principles to ensure your Clorox Total 360® devices are easily tracked and used, similar to EVS carts. Assign each device by shift or function.



CLOROXPRO TIP

Depending on where you choose to use the Clorox Total 360® System, you may decide to use devices only during the overnight EVS shift. If there is concern about sharing devices between employees, identify a Total 360® deployment supervisor to ensure devices are efficiently used and tracked.

A photograph of two Clorox Total 360 devices on a metal cart against a green wall. One device is upright and the other is lying flat.

Notes:

Where should the Clorox Total 360[®] System be stored?



The Clorox Total 360[®] device and its chemistries can be safely stored in any location where you currently hold disinfectants or other medical equipment. Clorox recommends storing devices in locations that are near the departments they are expected to be used in, allowing for easy and efficient retrieval when needed.

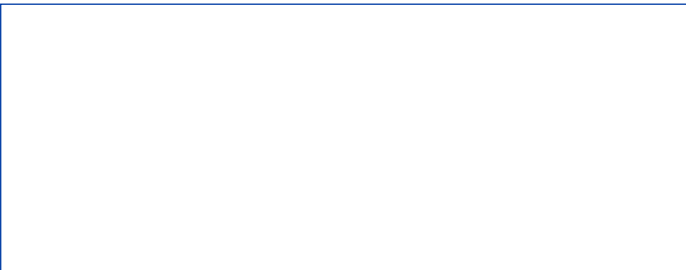
Safety Considerations			
Dilution	Size	Toxicity Signal Word	Safe to store next to other chemicals*
Ready to use	128 oz. bottle, 4 units/case	Caution	Yes

* Refer to the safety data sheet (SDS) for more information

Notes:

CLOROXPRO TIP

Tag your Clorox Total 360[®] devices with the room number where it is stored when not in use. This will make it easy for all users to understand where they are expected to return the device, even if it was transferred from another employee. Process through the biomedical equipment department for RFID tagging.



Clorox Australia Pty Ltd
Level 3, 10 Herb Elliott Ave,
Sydney Olympic Park NSW 2127
Australia

Phone: 1800 314 767

Clorox New Zealand Ltd
Level 8, Building 5, Central Park,
666 Great South Rd,
Penrose, Auckland 1061
New Zealand

Phone: 0800 000 280

www.cloroxpro.com