



Get ready for

WINTER WITH SALUTE

Contact your local rep for more information and purchasing options or order online.



Phone: 08 8398 2872
Fax: 08 8398 2873
Email: onlineorders@wesalute.com.au

GET READY FOR WINTER!



Purell Antiseptic Hand Gel
Table Top Pump Bottle 350ml

4-3691-12 - CTN 12
4-3691-12 - EACH

Purell Advanced Instant Hand
Sanitiser Gel Flip Cap Bottle 30ml

4-3900-99 - CTN 200



Microsafe Nanocyn
Disinfectant And Sanitiser 5L

5A-NDS001- EACH



Nanocyn Disinfectant And
Sanitiser 990ml

5A-NDS002 - EACH



Nanocyn Disinfectant And
Sanitiser 500ml

5A-NDS003- EACH



CLEARANCE



**Kleenex Facial Tissues Aloe Vera
3Ply 24 Boxes x 140 Sheets**

4-FT0299 - CTN 24

CLEARANCE



**Kleenex Mens Size Facial
Tissue 2ply**

KC205 - CTN 12

**Bastion Disinfectant
Surface Wipes, 42cm x
14cm, Tub of 75wipes**

4-BSW2322 - EACH



**Bastion IPA Surface Wipes 70%
Isopropyl Alcohol Impregnated
75 Wipe Canister EA**

BASBSW2412 - EACH



**Bastion Antibac Surface
Wipes 20x14cm Pack of
80wipes 24pk in Ctn**

4-BSW2543 - EACH

**Wow Wipes Dispenser
Floor Stand Matt Black**

4-MBSD - EACH



**Wow Wipes Large 2
Rolls 1200 Sheets**

4-MPC - CT2



**Bastion Disinfectant Surface
Wipes Alcohol Free 28x25cm
280 Sheet Tub**

BASBSW2726 - TUB

**View all our CLEARANCE products by
scanning the QR code or visiting our
website www.wesalute.com.au**





NEW CUSTOMER FOCUS



We're excited to be supporting our new customer, Journey Beyond, with brand-new mattresses. We look forward to working alongside their team and helping connect more customers with quality products designed for comfort, support, and a better night's sleep.

Enquire with your account manager today for more information.

We'd love to hear your
FEEDBACK!

Scan the QR code to fill out the form and let us know what we're doing right and how we can improve.

We really appreciate it.



Get to know SALUTE

Get to know Stuart, one of our Account Managers at Salute. When he's not at work, you'll usually find him out fishing and enjoying some time outdoors. Stuart also recently celebrated becoming an Australian citizen, which is a huge milestone and one we're incredibly excited for him to achieve.

We're grateful for everything Stuart brings to the team and really appreciate the hard work, dedication, and positive attitude he brings every day.



LATELY @ SALUTE



CUSTOMER TESTIMONIAL

Miller & Franklin Apartments, Adelaide



How did your partnership with Salute Better Solutions begin?

Our partnership began in 2021 when we were reviewing our suppliers for cleaning chemicals and consumables across our properties. We were looking for a provider who could reliably support our operational needs while understanding the demands of a busy hotel environment.

What has your overall experience been like working with your team?

Overall, our experience has been very positive. Your team has been responsive, helpful and easy to deal with. Orders are processed efficiently and any issues are resolved quickly, which is critical when managing multiple properties and high occupancy periods.

How would you describe your communication and collaboration process?

Communication has been clear and consistent. We appreciate the prompt replies, updates on deliveries and proactive approach when there are product changes or supply considerations. Collaboration has been straightforward and professional, making day to day operations smoother for our housekeeping and maintenance teams.

What sets Salute Better Solutions apart from other clients or partners you've worked with?

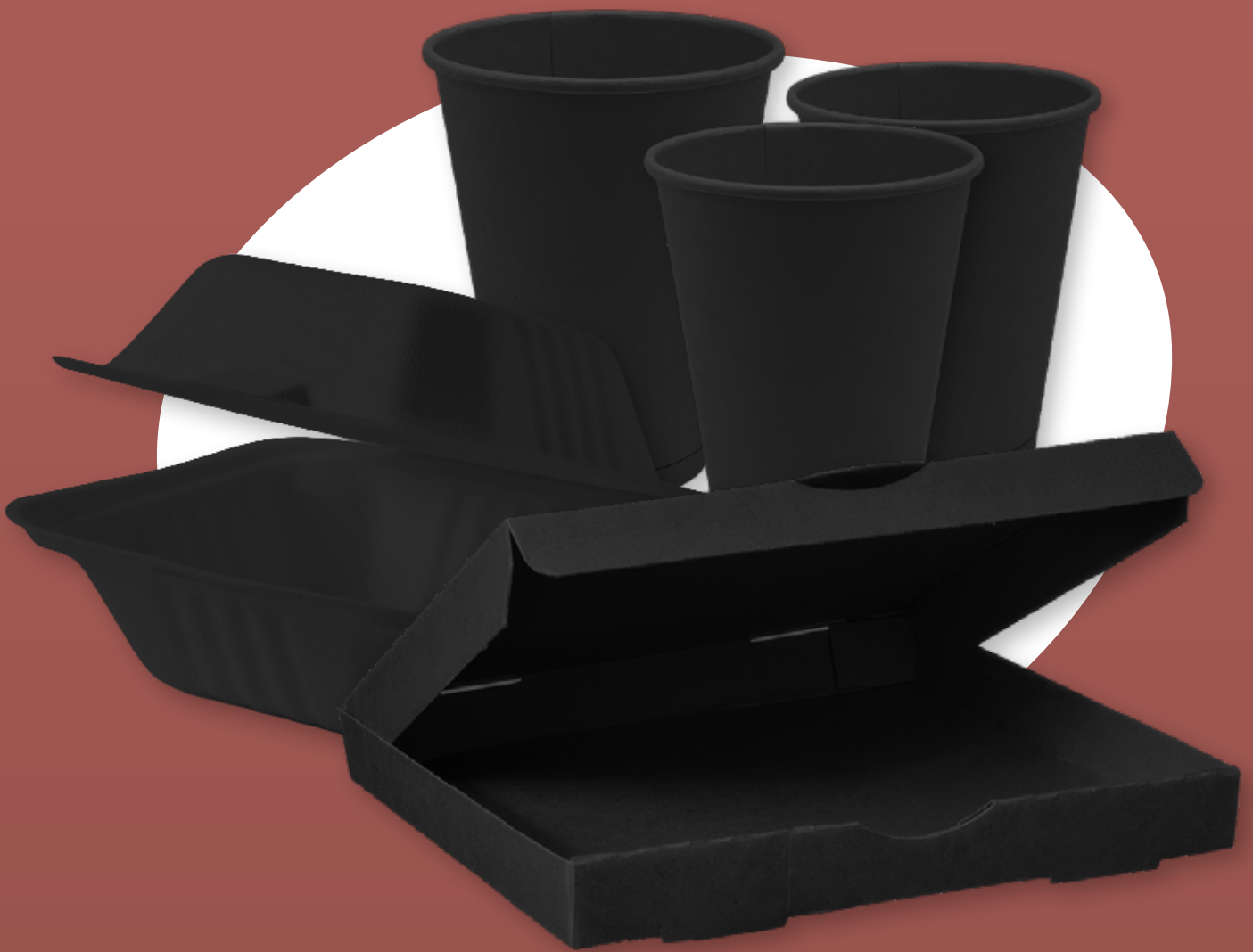
What sets Salute apart is reliability and service. Having a supplier that consistently delivers quality products on time, along with competitive pricing and strong customer support, makes a significant difference. Your understanding of hospitality requirements also ensures the products recommended suit our operational needs.

How would you rate the professionalism and reliability of your organisation?

We would rate Salute Better Solutions highly for professionalism and reliability. Your team is dependable, organised and professional in all interactions. We value the consistent service and ongoing support you provide across our properties.

Sarah Smith
Executive Housekeeping & Maintenance Manager & WHS Coordinator
Miller & Franklin Apartments, Adelaide

**SOMETHING BIG
IS COMING SOON**



 **ordek**

NEED A PICK-ME-UP?



Nestle Allens Party Mix Retro Lollies Bulk Bag 1kg

NAL12028834 - EACH - \$13.08



Nestle Allens Party Mix Lollies Bulk Bag 1.3kg

NAL109099 - EACH - \$15.06

Nestle Allens Killer Pythons Lollies Bulk Bag 1kg

NAL12262328 - EACH - \$16.43



Jacob Douwe Egberts Moccona Classic Medium Roast Instant Coffee Tin 500g

JDE1671867
EACH - \$42.58
CT6 - \$255.50



Nestle Milo Tin 1.9kg

NAL102296
EACH - \$33.15



Bundaberg White Sugar 1kg

CCC306236 - EACH - \$3.02



Bundaberg White Sugar 2kg

CCC096394 - EACH - \$4.49



Nestle Nescafe Blend 43 Instant Coffee Tin 500g

NAL102296
EACH - \$34.42
CT6 - \$206.50



CSR Raw Sugar 1kg

CCC043090 - EACH - \$4.20



Nestle Hot Chocolate Complete Mix Tin 2kg

NAL12086132 - EACH
- \$37.94



Lipton Yellow Black Envelope Tea Cup Bags

DKSG111042351 -
CT1200 - \$87.85

